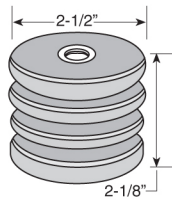


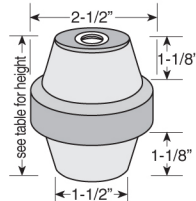
BUSBAR SUPPORTS, INSULATORS & BUSHINGS



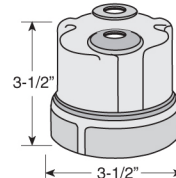
*The One Stop
Solution!*



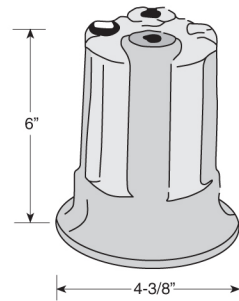
Series G61, 2.5kV Busbar Supports



Series G72, 4kV Busbar Supports



Series G42, 5kV Busbar Supports



Series G50, 15 kV Busbar Supports, 6" height.

INSERTS

The above sizes of extruded brass metric inserts are offered as standard, while other options in metric or inch sizes as specified by Customers i.e. M5, M8, 1/4" BSW, UNC etc., can also be offered.

STANDARD BUSBAR SUPPORTS

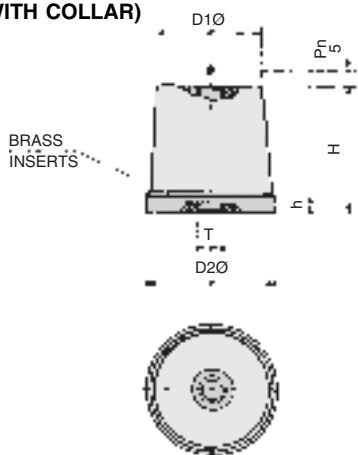
We offer a complete range of L.T. Busbar and Finger Supports and H. T. Insulators and Bushings. The L. T. Busbar and Finger Supports are normally moulded out of high grade Polyester Reinforced Resins (DMC or SMC respectively), and offer excellent support to the conductors in L. T. Panels. The Busbar Supports and Insulators are provided with brass inserts as a standard feature. Other insert options are also available on request. The Busbar Supports are offered in brick red, post office red (fire red), cherry red and black colours while the Finger Supports are in the international orange colour. The Busbar Supports can be offered in flame retardant resins as well.

H. T. Insulators and Bushings are moulded out of high quality Epoxy Resins. These are available in various options of sizes, shapes and for voltages of 1.1kV, 3.3kV, 6.6kV, 11kV, 22kV, or 33kV. Any specific Customer requirements can also be offered.

Sr. No.	Properties	DMC or SMC				FILLED EPOXY RESIN		
		Unit	Test Method	Value		Unit	Test Method	Value
				DMC	SMC			
PHYSICAL :								
1.	Specific Gravity	gms/cc	-	1.80	1.85	gms/cc	-	1.85 - 1.90
2.	Glass Content	%	-	20	15 to 18	-	-	-
3.	Water Absorption	%	-	0.20	0.20	%	ISO/R62	0.1 - 0.2
MECHANICAL :								
1.	Tensile Strength	kg/sq cm	BS 2782	1200	950	N/mm sq	ISO/R527	70 - 80
2.	Flexural Strength/Cross Breaking Strength	kg/sq cm	BS 2782	550	350	N/mm sq	ISO/R178	115 - 125
3.	Compressive Strength	kg/sq cm	BS 2782	1450	1500	N/mm sq	ISO/R604	200 - 220
4.	Impact Strength - Izod	kgcm/sq cm	BS 2782	35	15	kJ/M sq	ISO/R179	10 - 12
ELECTRICAL :								
1.	Di-Electric Strength	kV/mm	BS 2782	13	13	kV/mm	IEC 243	18 - 20
2.	Tracking Index	Volts	BS 5901	1000	1000	Volts	IEC 112	475
3.	Arc Resistance	Secs	BS 2782	220	220	Grade	DIN 53480	KA2
4.	Heat Distortion	Deg C	DIN 53458	150	160	Deg C	DSC	90 - 100
5.	Flammability		ASTM D495	SE	SE	-	-	-

STANDARD BUSBAR SUPPORTS

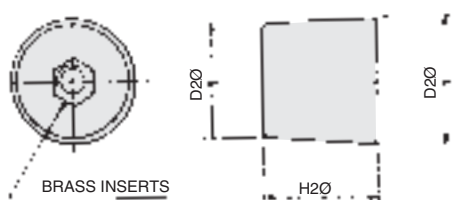
CONICAL BUSBAR SUPPORTS (WITH COLLAR)



Dimensional Data

Cat. Ref.	H	Insert	D1 Ø	D2 Ø	h
CON30M6	30	M6	21	30	5
CON40M8	40	M8	33	40	5
CON40M10	40	M10	33	40	5
CON50M10	50	M10	40	50	10
CON50M12	50	M12	40	50	10
CON60M10	60	M10	40	50	10
CON60M12	60	M12	40	50	8
CON70M10	70	M10	40	50	10
CON70M12	70	M12	40	50	10

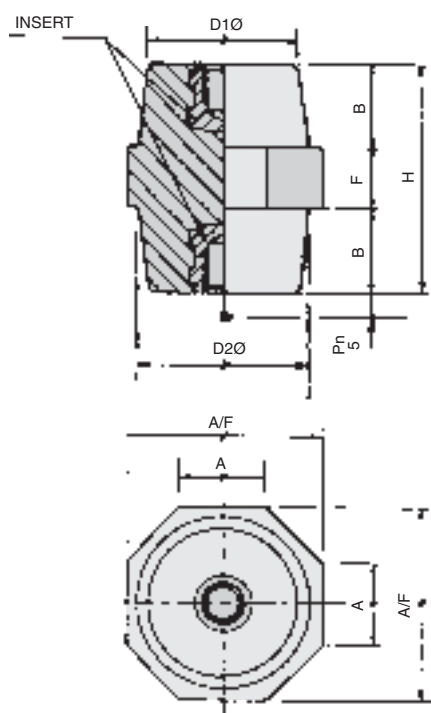
CONICAL BUSBAR SUPPORTS (WITHOUT COLLAR)



Dimensional Data

Cat. Ref.	H	Insert	D1 Ø	D2 Ø	Matl.
CON30M8A	30	M8	29	32	DMC
CON40M10A	40	10	44	50	EPOXY

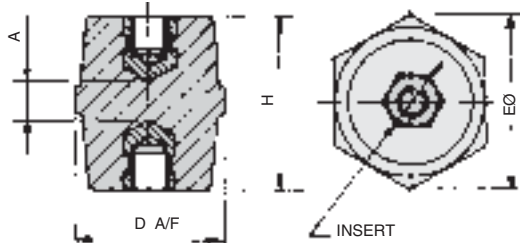
OCTAGONAL CENTREBAND BUSBAR SUPPORTS



Dimensional Data

Cat. Ref.	H	Insert	A/F	D1 Ø	D2 Ø	B	A	F
OCT14M4	14	M4	13.5	12	13	5.5	6	3
OCT20M5	20	M5	19	15	17	7.5	8	5
OCT25M5	25	M5	21	16	18	9	9	7
OCT25M6	25	M6	21	16	18	9	9	7
OCT30M6	30	M6	32	23	28	10.5	13	9
OCT30M8	30	M8	32	23	28	10.5	13	9
OCT35M5	35	M5	35	25	30	12.5	14	10
OCT35M6	35	M6	35	25	30	12.5	14	10
OCT35M8	35	M8	35	25	30	12.5	14	10
OCT40M6	40	M6	40	30	34.5	15	16	10
OCT40M8	40	M8	40	30	34.5	15	16	10
OCT40M10	40	M10	40	30	34.5	15	16	10
OCT45M8	45	M8	40	30	35	17.5	17	10
OCT45M10	45	M10	40	30	35	17.5	17	10
OCT50M10	50	M10	44	33	38	20	18	10
OCT55M10	55	M10	44	40	44	22	23	11
OCT60M10	60	M10	55	40	47	24.5	23	11
OCT60M12	60	M12	55	40	47	24.5	23	11

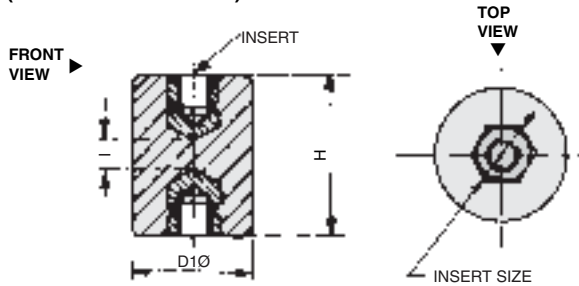
HEXAGONAL CENTREBAND BUSBAR SUPPORTS



Dimensional Data

Cat. Ref.	H	Insert	A/F	A	E Ø
HEX 12 M3	12	M 3	10	6	11
HEX 16 M4	16	M 4	15	8	17
HEX 20 M5	20	M 5	19	8	21
HEX 25 M6	25	M 6	22	11	24
HEX 35 M8	35	M 8	32	15	35
HEX 50 M10	50	M 10	50	20	55
HEX 75 M12	75	M 12	50	25	55
HEX 100 M16	100	M 16	65	50	70

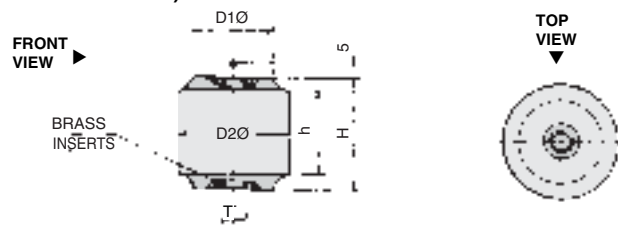
**CYLINDRICAL BUSBAR SUPPORTS
(WITHOUT CHAMFER)**



Dimensional Data

Cat. Ref.	H	Insert	D1 Ø	I	Material
CYL 25 M5A	25	M5	20	10	DMC
CYL 25 M6A	25	M6	20	10	DMC
CYL 30 M5A	30	M5	20	10	DMC
CYL 30 M6A1	30	M6	20	10	Epoxy
CYL 30 M6A	30	M6	30	10	DMC
CYL 30 M8A	30	M8	30	10	DMC
CYL 40 M8A	40	M8	40	10	DMC
CYL 40 M10A	40	M10	40	10	DMC
CYL 50 M10A	50	M10	50	10	DMC
CYL 50 M12A	50	M12	50	10	DMC
CYL 60 M6A1	60	M6	30	10	Epoxy
CYL 60 M10A	60	M10	50	10	DMC
CYL 60 M12A	60	M12	50	10	DMC
CYL 65 M6A1	65	M6	30	10	Epoxy
CYL 65 M10A	65	M10	65	12	DMC
CYL 65 M12A	65	M12	65	12	DMC
CYL 80 M6A1	80	M6	25	12	Epoxy

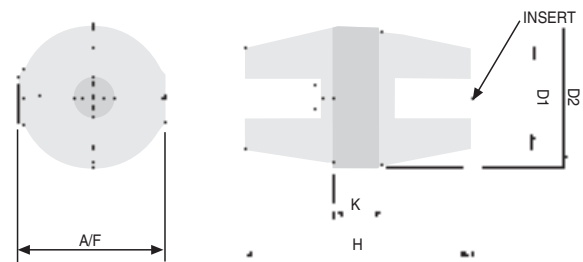
**CYLINDRICAL BUSBAR SUPPORTS
(WITH CHAMFER)**



Dimensional Data

Cat. Ref.	H	Insert	D1 Ø	D2 Ø	h
CYL 20 M5	20	M5	12	20	14
CYL 30 M6	30	M6	22	30	22
CYL 40 M8	40	M8	30	40	30
CYL 50 M10	50	M10	40	50	40
CYL 60 M10	60	M10	40	50	50

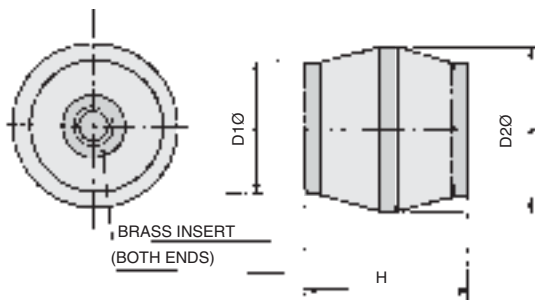
TAIWAN MODEL BUSBAR SUPPORTS



Dimensional Data

Cat. Ref.	H	Insert	D1 Ø	D2 Ø	K	A/F
TWN 35 M8	35	M8	28	29	8	32
TWN 51 M8	51	M8	29	32	13	37
TWN 76 M10	76	M10	36	43	16	50

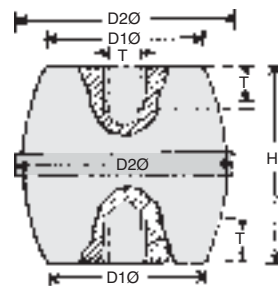
BUSBAR SUPPORTS - OTHERS



Dimensional Data

Cat. Ref.	H	Insert	D1 Ø	D2 Ø	Material
CH 35 M8	35	M8	28	35	Epoxy
CH 50 M10	50	M10	32	46	Epoxy

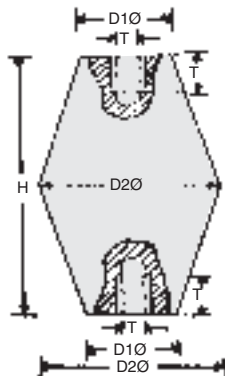
BUSBAR SUPPORTS - OTHERS



Dimensional Data

Cat. Ref.	H	Insert	D1 Ø	D2 Ø	I	Matl.	1 Min. P.F. Voltage
DT 30 M8	30	M8	31	40	10	DMC	2 KV
DT 35 M10	35	M10	34	40	10	EPOXY	5 KV
DT 38 M10	38	M10	40	48	12	DMC	10 KV

BUSBAR SUPPORTS - OTHERS

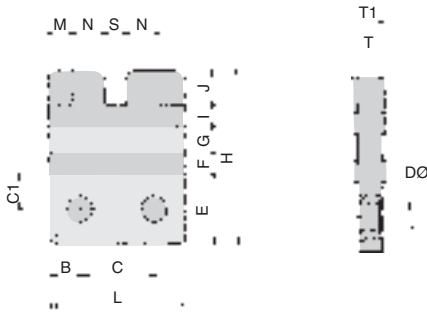


Dimensional Data

Cat. Ref.	H	T	D1 Ø	D2 Ø	I
BT 30 M6	30	M 6	20	30	8
BT 40 M6	40	M 6	30	40	12
BT 50 M8	50	M 8	30	45	12
BT 60 M8	60	M 8	30	45	12
BT 60 M10	60	M 10	38	56	12
BT 70 M8	70	M 8	30	45	12
BT 70 M10	70	M 10	38	56	12
BT 80 M8	80	M 8	30	45	12

FINGER BUSBAR SUPPORTS

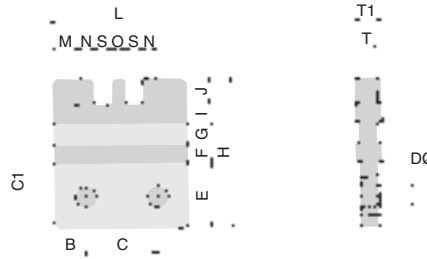
SUPPORT FOR ONE BUSBAR



Dimensional Data

Cat. Ref.	B	C	C1	DØ	E	F	G	H	I	J	L	M	N	P	S	T	T1
FIN 6.35 F1	11.5	27	12.5	8.5	26	8.5	10.5	6.6	8.5	12.5	50	9.25	12	2	7.5	8	12
FIN 9.5 F1	11.5	27	12.5	8.5	26	8.5	10.5	6.6	8.5	12.5	50	9	11	2	10	8	12
FIN 12.7 F1	19	28	12.5	8.5	26	8.5	10.5	6.6	8.5	12.5	50	9	9.5	2	13	8	12

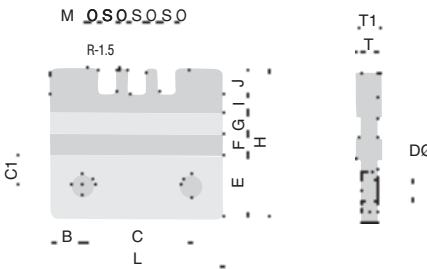
SUPPORT FOR TWO BUSBARS



Dimensional Data

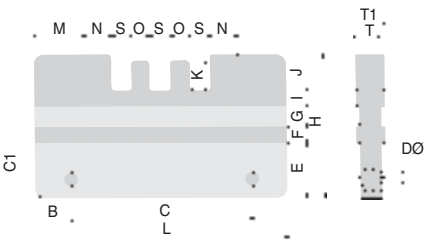
Cat. Ref.	B	C	C1	DØ	E	F	G	H	I	J	L	M	N	O	P	S	T	T1
FIN 6.35 F2	14	32	14.5	8.5	28	8.5	9.5	67	8.5	12.5	60	13.75	6	5.5	2	7.5	8	12
FIN 9.5 F2	15	50	14.5	10	28	9.5	10.5	70	9.5	12.5	80	16.25	9	8.5	2	10.5	12	16
FIN 9.5 F2A	14	40	14	9	27	8	9.5	65	8	12.5	68	10	8.5	9.5	2	10.5	10	14
FIN 12.7 F2	15	50	13.5	10	26	8.5	10.5	67	8.5	14	80	12.25	7	12.5	2	14.5	12	16

SUPPORT FOR THREE BUSBARS



Dimensional Data

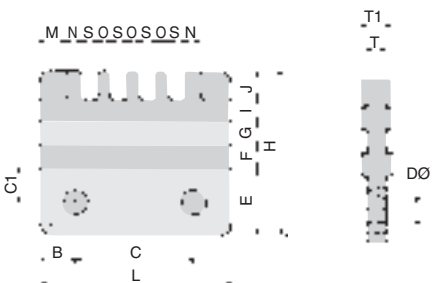
Cat. Ref.	B	C	C1	DØ	E	F	G	H	I	J	L	M	O	P	S	T	T1
FIN 6.35 F3	15	50	14.5	10	30	8.5	10.5	70	8.5	12.5	80	17.7	5.5	2	7.5	8	12
FIN 6.35 F3A	14.5	33	14.5	10.5	26.5	8.5	8.5	65	8.5	13.5	62	7.7	6	2.2	7.5	9.5	14



Dimensional Data

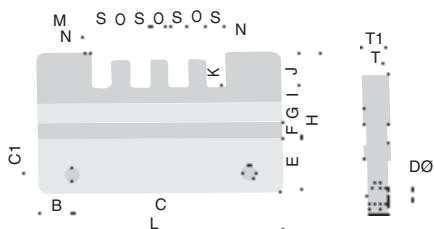
Cat. Ref.	B	C	C1	DØ	E	F	G	H	I	J	K	L	M	N	O	P	S	T	T1
FIN 9.5 F3	19.5	100	20	8.5	32.5	8.5	10.5	80	8.5	20	16	139	29.7	15	9	2	10.5	12	16
FIN 12.7 F3	19.5	100	20	8.5	32.5	8.5	10.5	80	8.5	20	16	139	26.7	10	12.5	2	13.5	12	16

SUPPORT FOR FOUR BUSBARS



Dimensional Data

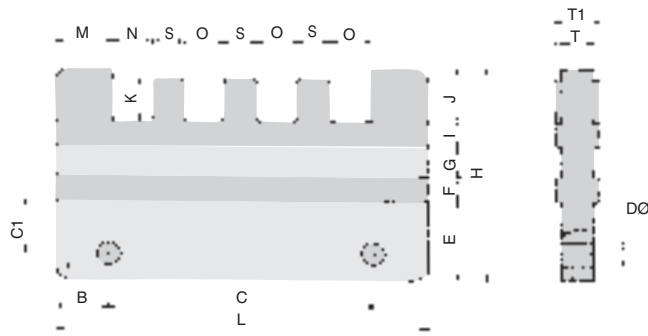
Cat. Ref.	B	C	C1	DØ	E	F	G	H	I	J	L	M	N	O	P	S	T	T1
FIN 6.35 F4	15	50	14.5	10	29	9.5	10.5	70	9.5	12.5	80	10.7	6	5.5	2	7.5	8	12



Dimensional Data

Cat. Ref.	B	C	C1	DØ	E	F	G	H	I	J	K	L	M	O	P	S	T	T1
FIN 12.7 F4	19.5	100	20	8.5	32.5	8.5	10.5	80	8.5	20	16	139	21.5	12	2	15	12	1.6

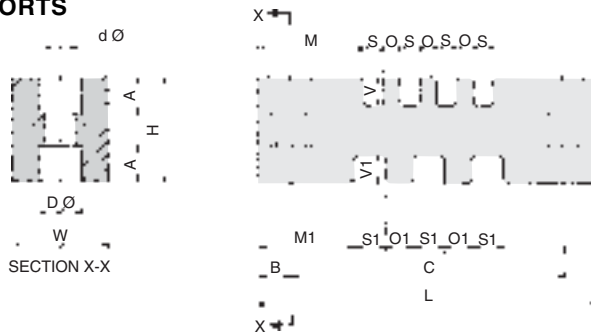
SUPPORT FOR FOUR BUSBARS



Dimensional Data

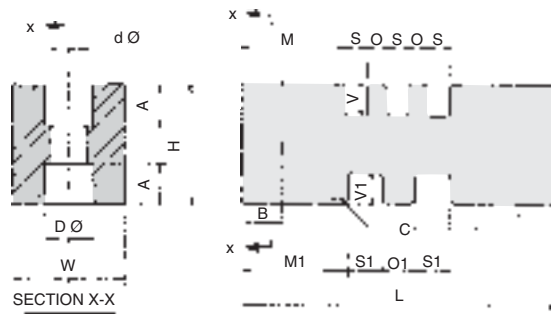
Cat. Ref.	B	C	C1	D Ø	E	F	G	H	I	J	L	M	N	O	P	S	T	T1
FIN 12.7 F4	19.5	100	20	8.5	32.5	8.5	10.5	80	8.5	20	16	139	21.5	12	2	15	12	16

DOUBLE SIDED FINGER SUPPORTS



Dimensional Data

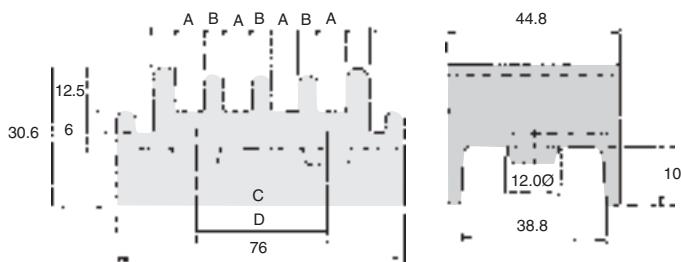
Cat. Ref.	A	B	C	D Ø	d Ø	H	L	M	M1	O	O1	S	S1	V	V1	W
FIN DS 2	13	12	100	14.5	10.5	38	124	38	35.5	6	10	7.5	11	10	10	35



Dimensional Data

Cat. Ref.	A	B	C	D Ø	d Ø	H	L	M	M1	O	O1	S	S1	V	V1	W
FIN DS 1	13	12.5	75	14.5	10.5	38	100	32.7	34	6	10	7.5	11	10	10	35

GRIP SUPPORTS



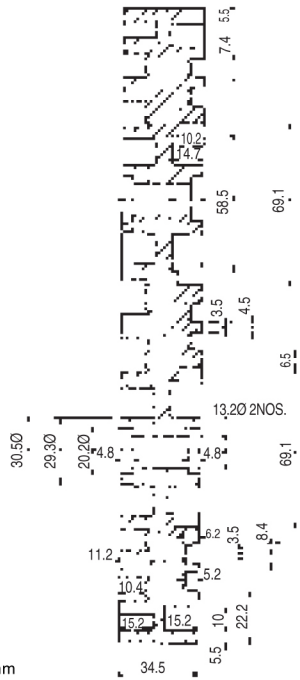
Dimensional Data

Cat. Ref.	Cap.	A	B	C	D
GRP6 F4	4x6	7.2	5.5	50	50.5
GRP10 F4	4x10	11.0	9.0	65	63.7
GRP12 F4	4x12	13.5	12.0	90	76.4

FINGER BUSBAR SUPPORTS

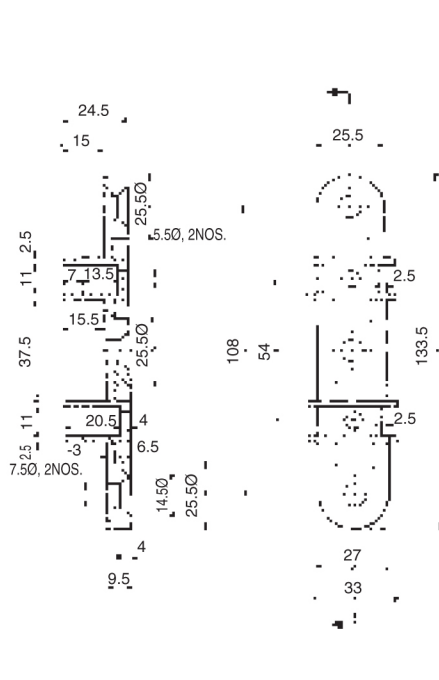
FINGER BUSBAR SUPPORTS - OTHERS

BUSBAR SUPPORTS - CAT. REF.: BSA

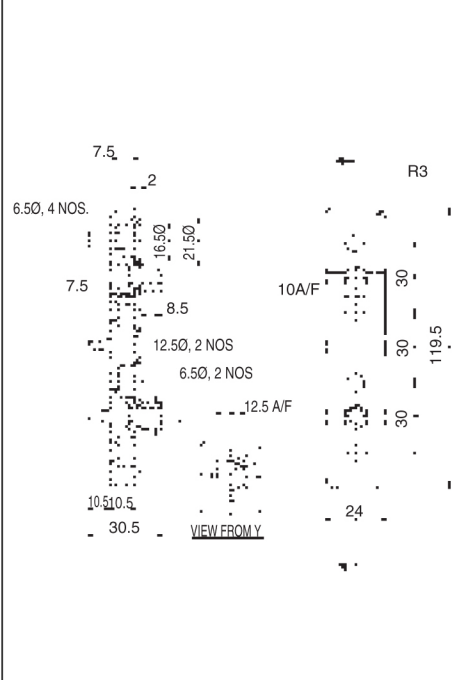


Width : 37mm

BUSBAR SUPPORTS - CAT. REF.: BSB



TERMINAL - CAT. REF.: TERM A





The One Stop Solution!

R3 Enterprise Pvt. Ltd.

278 & 280, F Wing, SOLARIS - 1,
2nd Floor, Saki - Vihar Road,
Andheri (E), Mumbai - 400 072, INDIA.

Tel. : + 91 - 22 - 4015 2502/503
Fax : + 91 - 22 - 4015 2501

E-mail : info@r3e.in
Website : www.r3e.in

